

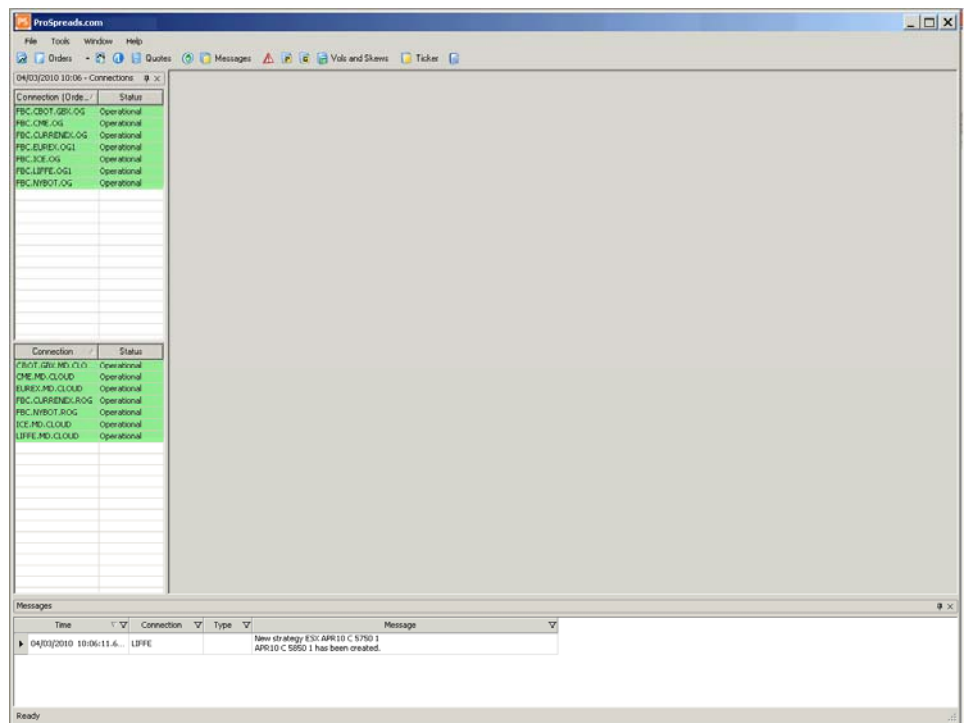
Default View

Your Workspace will be normally setup by our Dealers Group for you, below is a view of a default blank workspace.

The connections window is in view. This window gives details on Exchange connectivity with a traffic light format.

Red = Disconnected
Orange = Connecting/Initializing
Green = Operational

The Messages window is also available. This window shows all exchange messages (busted trades etc). Also shown within are any order rejections by risk and rejections by the exchange. This window should be used by the user to get exact details of any rejected order.



Icons

Below we are going to show you some of the icons that you need to get familiar with.



Opens the Market Window - The Central Trading Window of the Application.




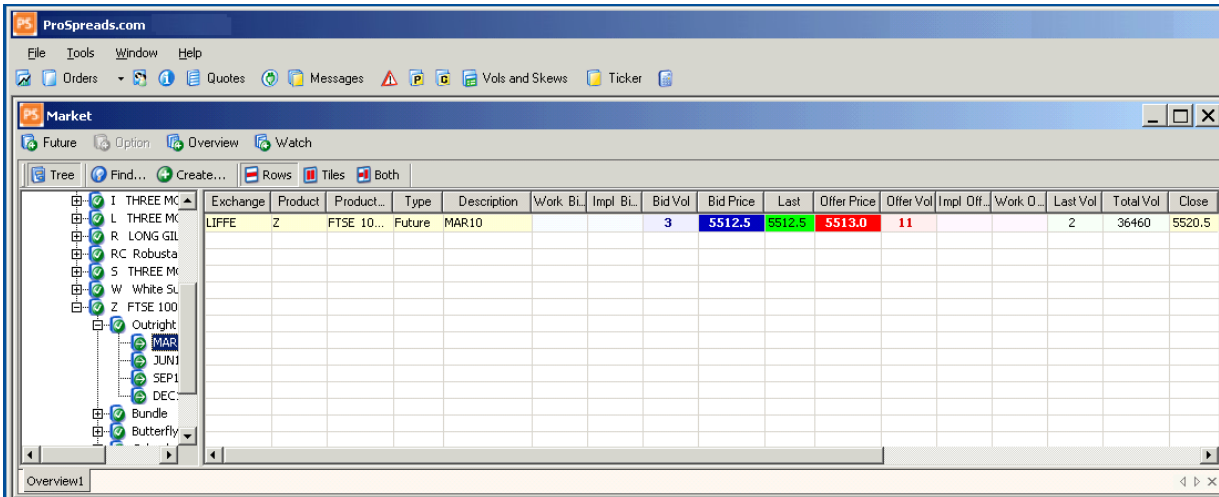
Opens the Position Window - Displays information on your Positions and P&L.




Opens the Orders Window - Shows full detail of all orders placed.

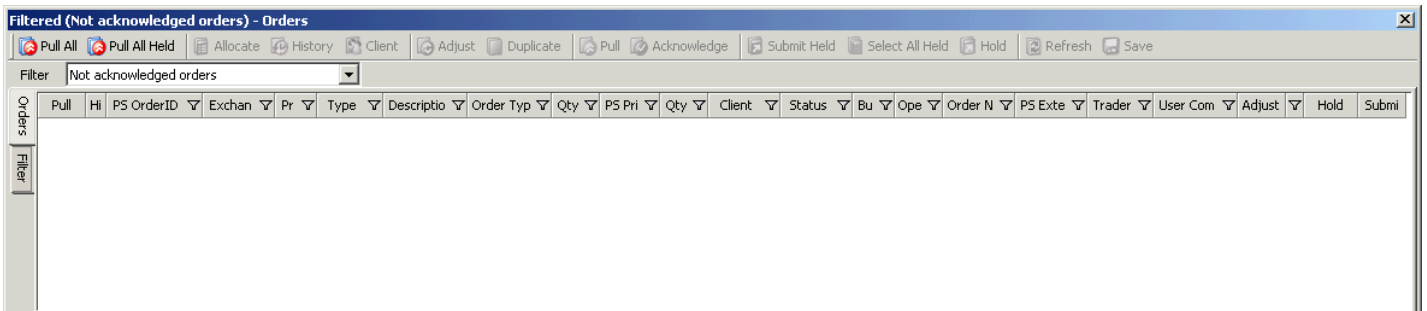
Market View

Clicking on  Icon will open Market View Window. Here you can add list of products to overview or watch list, add a complete series of expires for the future product by clicking 'Future'. You can also buy and sell using single clicking by clicking on the Bid or offer prices, you will be buying by clicking on the offer price and selling when you click on the bid price.




Orders View

Clicking on  Icon will open the orders window, you will be able to see your working, filled or pulled orders here. You can select from list of pre-created filters.



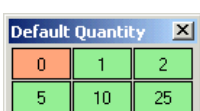
Positions View

Clicking on  Icon you will open the Position windows. Here you will be able to see the Product Name for all products traded that day or with an overnight position, Amount of contracts bought and sold that day and P/Ls for the positions whether open or cumulative.

Product	Contract	Type	Bought	Sold	Open	Avg Price	Last Price	Open P&L	Cum. P&L	CCY
TOTAL			5	5	0			N/A	477.11*	
FUT ON DAX INDEX	MAR10	Future	2	2	0	N/A	5801.0	N/A	300*	EUR
FTSE 100 (NEW STYLE) INDEX	MAR10	Future	3	3	0	N/A	5512.5	N/A	205*	GBP

Default Quantity

Click on tools and then Default Quantity to view this window. This is the quantity that will be used when you buy or sell using the single clicking option.



Quick Trade

This is our most popular way of trading. You can open a quick Trade(ladder) window by right clicking a product in the Market View and selecting Quick Trade.

QT Ticket: select default value by clicking the predefined numbers, these numbers can be changed by double clicking on them.

Columns

Net: Volume traded at that level.

Inf: Shows where your order is in the queue.

Work: Levels that your working Orders are placed.

Last: last traded Volume

QT Ticket		Z Future MAR10					
1	2	High	Low	Move	Volume	Limit	
5	10	5533.0	5489.5	-8.5	36711		
25	0	Net	Inf	Work	Bid	Price	Offer
Volume							Last
0					5517.5	21	
Price					5517.0	17	
					5516.5	38	
Net Pos.					5516.0	39	
0					5515.5	38	
Long Short					5515.0	36	
0 0					5514.5	31	
Lim Mkt					5514.0	47	
Buy					5513.5	19	
Sell					5513.0	21	
Pull Bids					5512.5	13	
Pull Offers					5512.0	5	1
Pull All					5511.5		
Trade Out					5511.0		
					5510.5		
					5510.0		
					5509.5		
					5509.0		
					5508.5		
					5508.0		
					5507.5		
					5507.0		
					5506.5		
					5506.0		
					5505.5		
					5505.0		
					5504.5		
					5504.0		
					5503.5		
					5503.0		
					5502.5		
					5502.0		

Right click in white are to get the following menu

- Show Order Ticket
- Last Trade Hover Box
- Launch Order Ticket On Submit
- Collapsible Depth
- Center Scalp
- Depth Size
- Flow Indicator
- Compress Level
- Style
- Column Chooser...
- Copy All To Clipboard
- Format Columns...
- Resize Columns
- Zoom
- Font Margin

Order Ticket

You can use order tickets to place orders. You can bring up an order Ticket by right clicking a product in the Market View and then selecting Submit Order. You can select buy, sell, volume size, price and order types in this window.

The screenshot shows an 'Order Ticket' window titled 'Volume is not valid - Order Ticket'. The main display area shows the order details: 'LIFFE FTSE 100 (NEW STYLE) INDEX (Z) MAR10 Buy 0 at 5495.0 Limit'. Below this are controls for 'Volume' and 'Price', each with a numeric keypad and a refresh button. The 'Volume' field is currently set to 0, and the 'Price' field is set to 5495.0. There are 'Buy' and 'Sell' buttons, with 'Buy' highlighted in blue. A 'Reset' button is also present. Below these are fields for 'Client', 'Order Type' (set to 'Lim'), and 'Rfq'. There are several checkboxes for order options: 'Held Order', 'Timed Order', 'Good Till Date', 'Good Till Cancelled', 'Immediate and Cancel', 'Complete Volume', 'Minimum Volume', and 'Close Position'. The 'Timed Order' checkbox is checked, and it has two date and time pickers set to '04/03/2010 00:00'. A 'Good Till Date' field is also set to '04/03/2010'. A callout box points to the top of the window, stating 'The pin, pins the order ticket allowing generation of multiple tickets'. Another callout points to the main display area, stating 'Exact description of the order being placed'. A callout points to the refresh buttons, stating 'Refreshes the order ticket'. A callout points to the 'Buy/Sell' buttons, stating 'Buy/Sell: toggles the order ticket'. A callout points to the 'Order Type' dropdown, stating 'Order types: The standard Limit and Market, however others types, either supported at the Exchange or synthetically generated by us are available from the dropdown. Some of the available type are: Stop, Trailing Stop etc....'. A callout points to the 'Timed Order' section, stating 'Timed order will allow you to place a from and to date and time for your order'.

The pin, pins the order ticket allowing generation of multiple tickets

Exact description of the order being placed

Refreshes the order ticket

Buy/Sell: toggles the order ticket

Order types: The standard Limit and Market, however others types, either supported at the Exchange or synthetically generated by us are available from the dropdown. Some of the available type are: Stop, Trailing Stop etc....

Timed order will allow you to place a from and to date and time for your order

Typical Workspace

You can save this by clicking File and selecting save workspace.

The screenshot displays the Pro5spreads.com trading platform interface. The main window is titled "Market" and shows a table of market data for FTSE 100 futures. The table includes columns for Exchange, Product, Type, Description, Work Bi., Impl Bi., Bid Vol, Bid Price, Last, Offer Price, Offer Vol, Impl Off., Work O., Last Vol, Total Vol, Close, Change, Trade..., Daily Low, and Daily High. The current bid price is 5711.0 and the last price is 5710.5.

Below the market data is a "Position" summary table:

Product	Contract	Type	Bought	Sold	Open	Avg Price	Last Price	Open P&L	Cum. P&L
TOTAL			4	3	1			-131.88*	-401.11*
Euro FX	JUN10	Future	2	1	1	1.3348	1.3332	-200*	-881.25*
FTSE 100 (NEW STYLE) INDEX	JUN10	Future	2	2	0	N/A	5710.5	N/A	180*

At the bottom, there is a "Filtered (Not acknowledged orders) - Orders" section with a table of open orders:

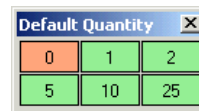
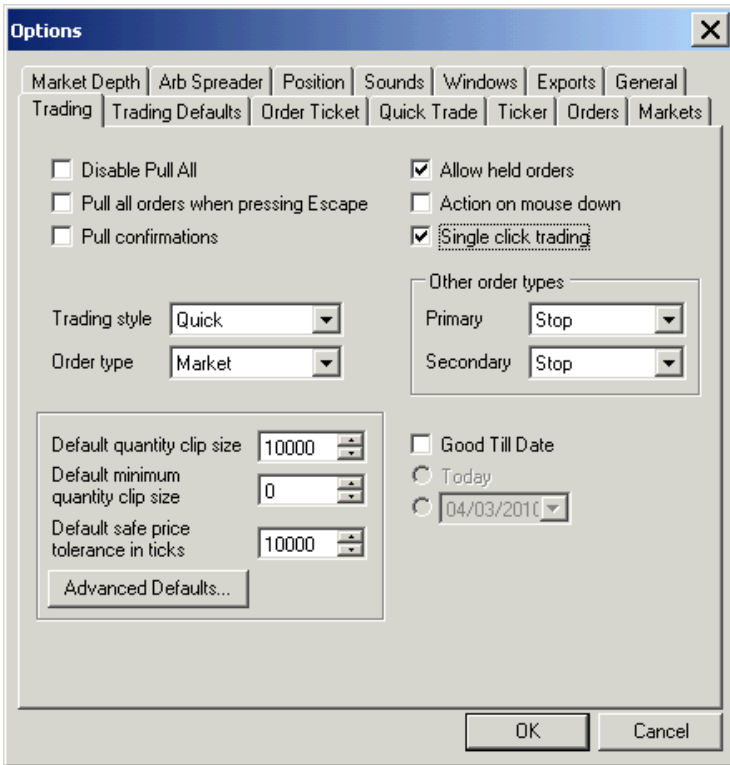
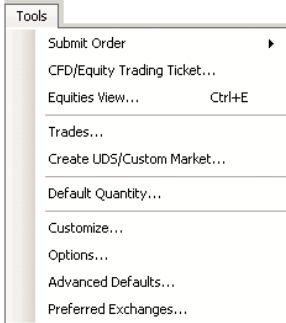
Order N	PS OrderID	Exchan	Pr	Type	Descriptio	Order Typ	Qty	PS Pri	Qty	Client	Status	Bu	Ope	Order N	PS Ex
31	180460352	CME	6E	Future	JUN10	Stop Limit:...	1	1.3310	0	FBcBro	Active	Sell	Open	YZR180...	6214E
36	180459352	CME	6E	Future	JUN10	Limit	1	1.3306*	1	FBcBro	Filled	Sell	Open	YZR180...	6214E
40	180458352	CME	6E	Future	JUN10	Limit	1	1.3370	0	FBcBro	Active	Sell	Open	YZR180...	6214E

On the right side, there is a "QT Ticket" window and a "Future JUN10" order book window. The order book shows a range of prices from 5703.5 to 5720.0, with bid and offer volumes. The current bid is 5710.5 and the offer is 5711.5.

Single Click Trading

A simple click of the mouse will instantly execute a 'market' on 'limit' order with a user defined default quantity.

To enable single click trading, you need to select Tools then Options and make sure the Single Click Trading box is checked.



You also need to select your default quantity that you wish to trade.

Product	Product...	Type	Description	Work Bi...	Impl Bi...	Bid Vol	Bid Price	Last	Offer Price	Offer Vol	Impl Off...	Work O...
Z	FTSE 10...	Future	MAR10			6	5511.0	5511.5	5512.0	34		

You can then Buy or sell by clicking on the bid and offer prices. Left click on the Bid Prices to sell and left click on the Offer Price to buy.

Order Tickets

This is the more traditional way of executing any order. Simply select your price and volume and click to sell or buy. You can place Limit orders or do market orders using this ticket.

Volume: this is where you set your quantity size.

Price: this is where you select the Limit Price.

Buy / Sell: This is where you can change the Order ticket to a Sell or Buy Ticket.

Order Type: Here you can select from different order types like: Stop, Trailing Stop, stc

Opens OCO (one cancels other) window

Buy or Sell: click here to place your order.

Ladder

The ladder is the most popular way to trade and allows the user to place the most common types of orders on a dynamic depth of market screen. This is the scalpers choice for executing spread bet orders.

QT Ticket: this is where you select your default quantity size and also you can see your net position.

Market Orders:
 Click on Mkt button, this highlights the Buy / Sell buttons.
 Click on Buy to buy at Market.
 Click on Sell to sell at Market.

Trade Out: Clicking on this button will trade you out of all your open positions on this particular product.

Limit/Stop Orders:
 Left click in Offer column (Red) to place limit sell orders.
 Left click in Bid column (Blue) to place limit buy orders.
 Right Click on the grey column to place stop orders.
 Left Click on the grey column to place a marker, marker will disappear if the market trades at that specific price.

High	Low	Move	Volume	Limit		
5065.0	-13.0		80329			
Net	Inf	Work	Bid	Price	Offer	Last
			5105.5		12	
			5105.0		20	
			5104.5		19	
			5104.0		12	
			5103.5		12	
			5103.0		20	
			5102.5		13	
			5102.0		34	
			5101.5		38	
			5101.0		40	
			5100.5		41	
			5100.0		20	
			5099.5		28	
			5099.0		27	
			5098.5		21	
			5098.0		33	
			5097.5		6	
			5097.0		21	
			5096.5		26	
			5096.0		22	
			5095.5		24	
			5095.0		18	
			5094.5		7	
			5094.0		7	3
			5093.5			
			5093.0			
			5092.5			
			5092.0			
			5091.5			
			5091.0			
			5090.5			
			5090.0			
			5089.5			
			5089.0			
			5088.5			
			5088.0			
			5087.5			
			5087.0			
			5086.5			
			5086.0			